

Music Theatre International
423 West 55th Street
Second Floor
New York, NY 10019
Phone: (212) 541-4684
Fax: (212) 397-4684



Audition Central: Disney's Frozen JR.

Score: Middle Anna

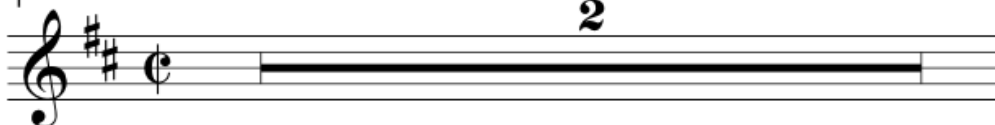
Do You Want to Build a Snowman?

YOUNG ANNA:

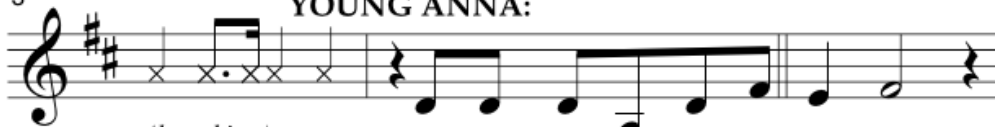
It's snowing! Elsa?

(All excited, YOUNG ANNA rushes to Elsa's door. Knocks.)

1 2



3 **YOUNG ANNA:**



(knocking) Do you want to build a snow-man?

6

Come on, let's go and play.

8

I nev-er see you an-y-more. Come out the

10

door. It's like you've gone a - way.

12

We used to be best bud-dies and

14

now we're not. I wish you would tell me

16

why. Do you want to build a snow-man?

19

It does-n't have to be a snow-man.

21 **YOUNG ELSA: (YOUNG ANNA):**
Go away, Anna. *(disappointed)*

O - kay bye.

(YOUNG ANNA exits. KING AGNARR and QUEEN IDUNA are with YOUNG ELSA. YOUNG ELSA is doing all she can to hold in her spirit, to not mess up.)

YOUNG ELSA: I'm doing everything you said. The gloves are helping.

QUEEN IDUNA: Good.

KING AGNARR: Now, again....

YOUNG ELSA: Conceal it. Don't feel it.

KING AGNARR, QUEEN IDUNA, YOUNG ELSA: Don't let it show.

(ALL exit. MIDDLE ANNA enters. A few years have passed. She knocks.)

23 **6**

29 **MIDDLE ANNA:**
(knocking)

Do you want to build a snow-man?

32

Or ride our bike a-round the halls?

34

I think some com-pa-ny is o-ver-due, I've star-ted

36 *(gesturing to painting of Joan of Arc)*

talk-ing to the pic-tures on the walls. Hang in there,

38



Joan. It gets a lit - tle lone - ly, all these

40



emp-ty rooms. Just watch-ing the hours tick

42



by. (tongue clicks)

(MIDDLE ANNA exits. KING AGNARR now tries to comfort a panicked MIDDLE ELSA.)

MIDDLE ELSA: I've been hiding my powers for years, but I'm so afraid. They're getting stronger!

KING AGNARR: Come here, my poor child.

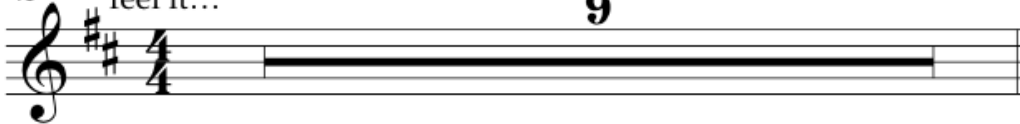
(KING AGNARR goes to hug MIDDLE ELSA.)

MIDDLE ELSA: No. Don't touch me! I don't want to hurt you.

(reciting her mantra) Conceal it. Don't feel it. Conceal it. Don't

feel it...

45



(QUEEN IDUNA enters, on the other side of the door.)

QUEEN IDUNA: Anna! It's time for us to leave!

(MIDDLE ANNA enters and hugs her MOTHER.)

MIDDLE ANNA: I'm going to miss you.

QUEEN IDUNA: We'll only be gone a couple of weeks, my sunshine.

(Back on Elsa's side, MIDDLE ELSA stands at a formal distance from KING AGNARR.)

MIDDLE ELSA: Please, do you have to go?

KING AGNARR: Yes. There are answers out there, Elsa, to help you, to help all of us.

MIDDLE ELSA: I can't do this here on my own.

KING AGNARR: You can. And you must. We're proud of you.

MIDDLE ELSA: I'll try not to let you down, Father.

54



(MIDDLE ANNA and MIDDLE ELSA exit. KING AGNARR and QUEEN IDUNA meet down center. As the music shifts, they exit somberly. TOWNSPEOPLE and the BISHOP cross.)

68



73

GROUP 1:



GROUP 2:



TOWNSPERSON 1: Did you hear? Did you hear? The King and Queen were lost at sea!

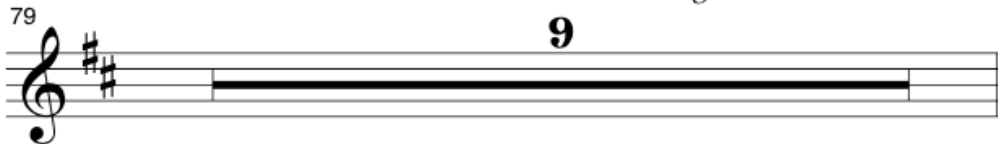
TOWNSPERSON 2: The King and Queen have died? How tragic!

BISHOP: As Bishop of Arendelle, I proclaim we shall honor their ways until our young Queen, Elsa, comes of age.

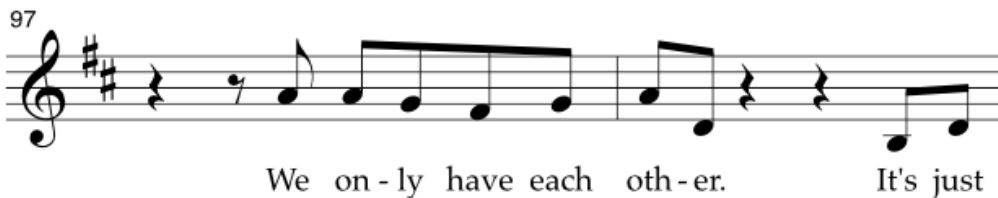
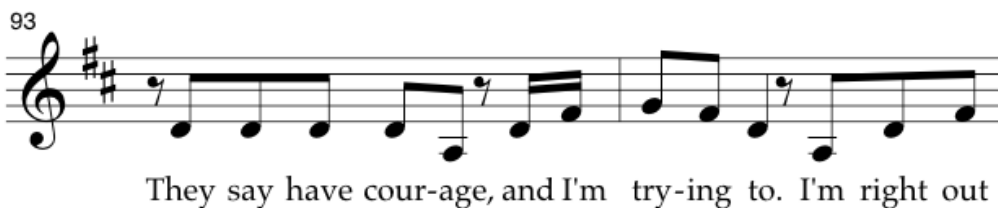
TOWNSPERSON 3: May they rest in peace.

TOWNSPERSON 4: Those poor daughters. All alone...

(The TOWNSPEOPLE and BISHOP exit. MIDDLE ANNA and MIDDLE ELSA re-enter alone, still separated by the door, and filled with sadness. MIDDLE ANNA tries knocking, one more time.)



MIDDLE ANNA:
Elsa?



99



you and me. What are we gon-na do? _____

(No answer. MIDDLE ANNA gives up and exits.)

MIDDLE ELSA:

(longingly, unheard by Middle Anna)

103



Do you want to build a snow-man?